

High Pressure Pump Units

AQUAJET® 20 • S 1600-20 • S 1100-20

The endurance runners at particularly favourable operating costs

High energy savings

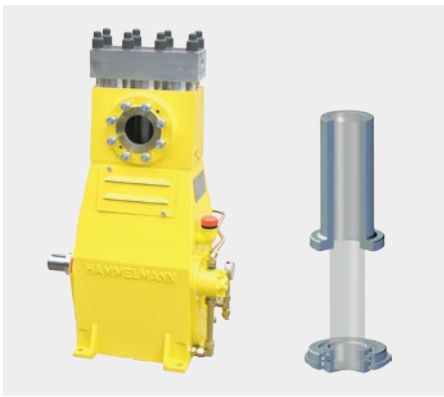
Sturdy industrial engine

Other versions

Safe operation

High mobility

Application systems



The endurance runner in top quality

- **Long lifetime of all high pressure components** due to optimal valve and sealing technology. use of top quality materials and precise series production with most modern machines
- **Long lasting corrosion resistance** of the fluid end
- **High operational reliability** and long maintenance intervals through the hermetical sealing of the gear end by means of the patented bellows sealing system
- **Leakage free pump** thanks to the arrangement of all pressurised high pressure components inside the pump housing
- **Significant operating cost advantage** thanks to the crank section with pressurised lubrication system which is designed for at least 25,000 operating hours under full load
- **High reliability in continuous duty** due to the performance reserves of high pressure pump, drive engine and all components

Energy savings through high efficiency

- **High efficiency.** The Aquajet ultra high pressure pump converts 95 % of the shaft power into hydraulic energy
- **Very smooth running** due to low speed at maximum performance
- **Low diesel consumption** due to modern engines

Safe operation

- **Everything under control.** Control and monitoring by means of the Hammelmann ES3 control unit. Intuitive navigation in many languages. All important operating data at a glance.
- **Easy commissioning** due to easily accessible supply and high pressure connections

Sturdy industrial engine

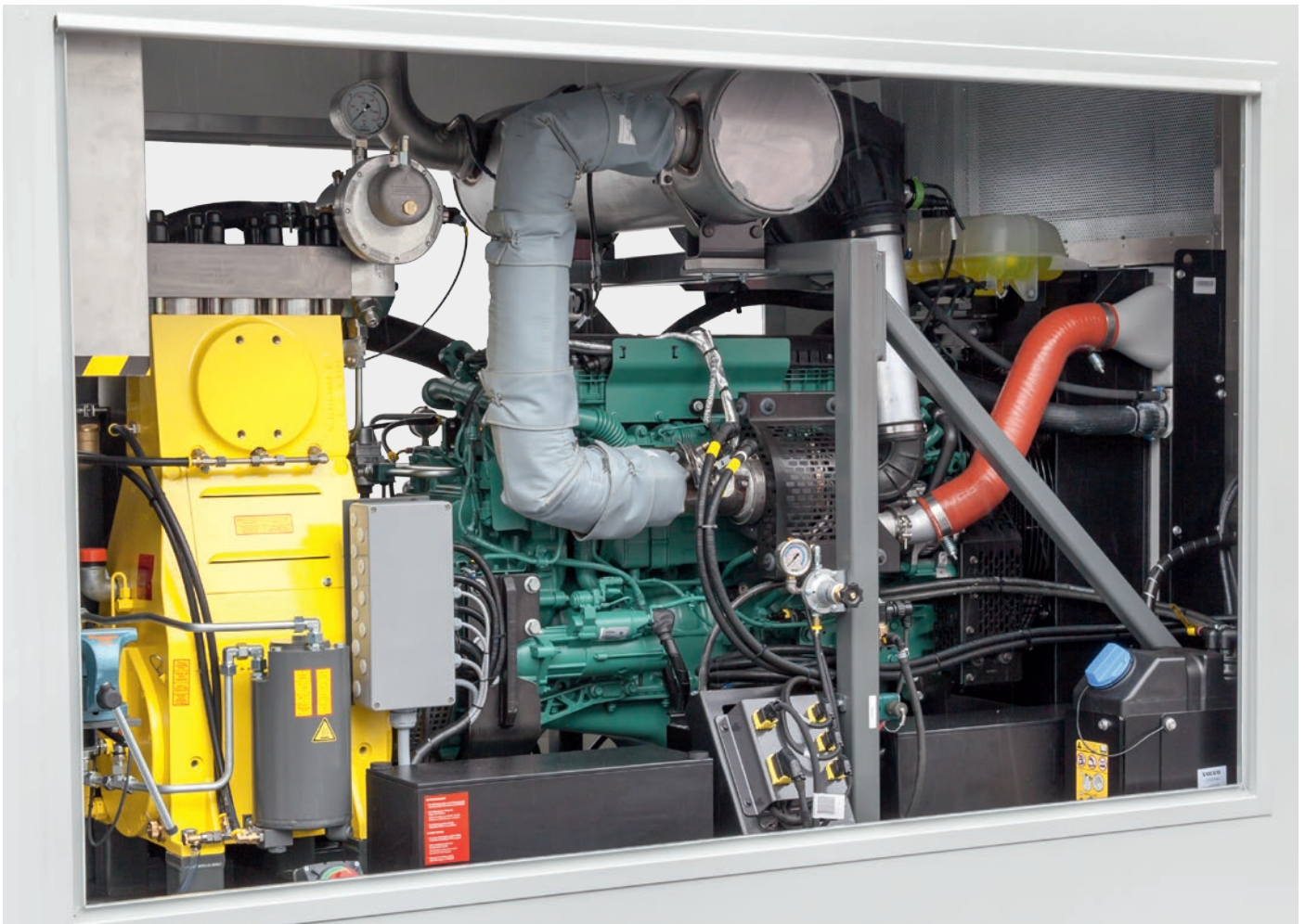
- **Economical industrial engines** in accordance with the current exhaust emission certification step 4
- **Ample power reserves:** 235 kW engines for real 200 kW pump performance

High mobility

- **Low noise pump unit** due to super soundproofing ≤ 75 dB(A) at distance of 7 m, ≤ 84 dB(A) at distance of 1 m
- **Environmentally safe operation** due to totally enclosed bottom tray made of aluminium
- **Large fuel reserve.** Minimum of 8 hours operation possible due to the large internal fuel tank
- **High quality tandem chassis** with overrun brake. Chassis is completely galvanised
- **Can be easily positioned** by means of 4 point lifting lugs or optional central single point lifting device



- **Spray gun handle**
- **Vice**
- **Interior LED lighting**
- **Document compartment**



Stationary unit driven by Volvo engine with AdBlue® system

Technical data

Model	Plunger Ø	Operating pressure	Flow rate	Engine power	Pump power
AQUAJET 20	17.5 mm	3200 bar	28 l/min	235 kW	200 kW
	20 mm	2800 bar	40 l/min		
S 1600-20	28 mm	1400 bar	78 l/min		
S 1100-20	32 mm	1050 bar	100 l/min		

Mobile units

Further versions available



Road going

Length: 4.93 m
Width: 2.20 m
Height: 2.64 m

Weight: 3.5 t



Stationary

Length: 3.40 m
Width: 1.80 m
Height: 2.22 m

Weight: 3.3 t



Basic

Length: 2.13 m
Width: 1.33 m
Height: 2.21 m

Weight: 2.2 t



10' - Container

Länge: 2.99 m
Breite: 2.44 m
Höhe: 2.54 m

Gewicht: 5.3 t

Overall dimensions – All weights are net weights incl. fuel

Industrial high pressure application systems

Hammelmann high pressure pump units can be used with a wide range of water tools

